



IDERA Team Server / Repository

Installation and Upgrade Guide

Version 21.0.x
Published March 2026

© 2026 IDERA, Inc. All rights reserved. IDERA and the IDERA logo are trademarks or registered trademarks of IDERA, Inc. Database tools product names are trademarks or registered trademarks of Embarcadero Technologies, Inc., a wholly owned subsidiary of IDERA, Inc.

March 1, 2026

Contents

Installation and upgrade notes	4
System requirements	4
Minimum requirements	5
Supported web browsers	5
Installation and upgrade checklist	6
Conflicts.....	6
Database server requirements.....	7
Supported database platforms.....	7
Oracle characteristics	7
Microsoft SQL Server characteristics	8
About Team Server and Repository upgrade	9
Prerequisites.....	9
Preparing the upgrade	9
Repository user preparations	9
Repository administrator preparations.....	9
Upgrading from Team Server 4.0.x, CONNECT 3.0.x or ER/Studio Portal 2.0.x.....	10
Upgrade scenarios	10
Upgrades from Team Server 16.x which includes Repository 7.0.1.....	10
Upgrades from Repository 7.0.X (Standalone).....	10
Upgrade from Repository prior to 6.5/6.6/6.7 (Standalone) and TS 4.0 or before	10
Upgrade configuration	11
Important notes.....	11
Install or upgrade Team Server/ Repository.....	12
Modify configuration.....	21
Upgrading diagrams in Data Architect (<i>19.0 or earlier upgrades only</i>)	22
Uninstalling Team Server	23

Installation and upgrade notes

These notes provide important information about product requirements for Team Server and Repository installation and upgrade. You should read this document in its entirety before any install, upgrade, or uninstall procedure.



We also recommend that appropriate staff from your organization are involved. Team Server has a number of components and features which are non-trivial and may fall under the best practice and/or governance policies, standards and controls of your organization. Team Server has the following elements that may require consideration:

- **Server Platform.** May require your infrastructure team to provide with appropriate operating systems and install privileges.
- **The database runs on Oracle or Microsoft SQL server.** This may require involvement of your data architecture and/or Database Administration team.
- **Web Application Server.** Although the installer will perform much of the work in installing the Tomcat application server installation of https certificates may be required from your web or infrastructure team and security policies may apply.
- **Authentication.** Team Server can be connected with your existing Active Directory which will need approvals and information from your infrastructure team and support to configure Team server
- **Team Server email notifications.** This will require SMTP details and support from your infrastructure team.



Do not install Data Architect and Team Server on the same machine. This may cause instabilities in both products.

If you have problems or questions, you should contact the Idera support team at <https://www.embarcadero.com/support>.

System requirements

Before installing or upgrading Team Server and Repository, verify that your environment meets the hardware and operating system requirements. Adhering to these requirements optimizes performance. These hardware requirements are based on a 5-10 user environment.



For more than 10 users, ensure your hardware surpasses the previously-stated hardware requirements to accommodate the number of transactions that increase as the number of users increases.



If upgrading an existing installation on the same application server, do not uninstall the previous version. The new version will back up the data from the previous version and restore it as part of the new Team Server/Repository installation procedure. This procedure allows published diagrams and workspaces to remain published after upgrade.

Minimum requirements

Hardware	Database Server	Application Server
Processor	As required by your database platform.	4+ (<i>8+ recommended</i>)
RAM		6+ GB (<i>8 GB recommended</i>)
Disk Space		5 GB + 50 MB per Team Server + additional database growth (if the database is on the same server)
Operating System	As supported by your database platform.	Any of the following (64-bit): <ul style="list-style-type: none"> Windows Server 2016 Windows Server 2019 Windows Server 2022 Windows Server 2025
Software	<ul style="list-style-type: none"> Transaction Control Protocol (TCP) up and running. Single-byte character sets are supported as long as the database is set to the required code page (character set). UNICODE and UTF8 are not supported. 	TCP up and running
Privileges	<ul style="list-style-type: none"> DBMS privileges to create objects on the server Local administrator privileges 	



To provide a great user experience, the following minimum configuration is strongly recommended for Team Server.

Additional notes

- If you install the Application and the Database on the same server, consider surpassing the hardware requirements described previously.
- Supported DBMS (see [Database Server Requirements](#))

Supported web browsers

The following web browsers are tested to work with Team Server. Other browsers may work, but are not officially supported:

- Google Chrome
- Microsoft Edge
- Mozilla Firefox

To be able to launch the [configurator](#) within Microsoft Edge, follow next steps:

1. Open the **Control Panel > Internet Options** dialog.
2. Go to the Security tab.
3. Select **Local intranet** zone and click the **Sites** button.
4. Check the **Automatically detect intranet network** box.

Installation and upgrade checklist



Before running the installer for an upgrade, stop the **IderaTeamServer** service from the Services control panel.

- The installation user account must have local administrative privileges.
- (*Oracle Only*) To install, you need to create an empty database for Team Server, unless you already have a database and will be reinitializing it during the install.
- The database server to be used must be running.
- If you want to configure LDAP authentication to allow directory service users to log into Team Server, check that your LDAP server is up and running.
- If you want to enable Team Server email notifications, check that your SMTP server is up and running. You may want to prepare a special email address on your email server for this purpose.
- An ER/Studio Data Architect version that corresponds to the version to which you want to upgrade must be installed on a separate client machine.
- After initial install and upgrade the settings return to default. Set Java Memory settings such as Initial and Maximum Memory Pools based on your available machine RAM. This affects performance.

Conflicts



If upgrading an existing installation on the same application server, do not uninstall the previous version. The new version will back up the data from the previous version and restore it as part of the new Team Server/Repository installation procedure. This procedure allows published diagrams and workspaces to remain published after upgrade.

See also

- [Install or upgrade Team Server/Repository](#)
- [Database server requirements](#)

Database server requirements

Supported database platforms

Team Server and Repository databases may run on any of the following database platforms:

- Microsoft Azure SQL Database
- Microsoft SQL Server 2019 to 2022
 - Microsoft SQL Server Express Edition 2012 to 2022 is supported, but presents performance limitations that may be unsuitable for your production environment.
 - AWS SQL Server RDS. For this we recommend that the Team Server application is also running on an AWS instance,
- Oracle 19c
 - AWS Oracle RDS. For this we recommend that the Team Server application is also running on an AWS instance.



ERTS supports running from Amazon EC2 or Azure IaaS environments.

In order for the Repository to communicate with the database, the machine running Team Server must also have the corresponding RDBMS client utility installed.

Oracle characteristics

- Install the 64-bit version of Oracle Client Utilities. Make sure that only the same version of the client is installed as the database.
- Configure your server in one of the following Oracle configuration tools:
 - Net Easy Config
 - Net Configuration Assistant
- Create a connection alias.
- If you are upgrading using Oracle, increase the number of processes (connections) to 200 before running.
- Tablespace size should be 16k blocksize.
- Minimum permissions for owner of Repository and Team Server schema:
 - Roles: SELECT_CATALOG_ROLE
 - Privileges:

CREATE INDEXTYPE	CREATE TYPE
CREATE PROCEDURE	CREATE VIEW
CREATE SEQUENCE	UNLIMITED TABLESPACE
CREATE SESSION	EXECUTE ON DBMS_SQL
CREATE SYNONYM	EXECUTE ON DBMS_LOB
CREATE TABLE	EXECUTE ON DBMS_RANDOM
CREATE TRIGGER	
- The above permissions can be set using a script located at: [Installation Script For Oracle Permissions](#).

- With the new user, make sure you can connect via SQL*Plus and that you can create objects. Then, remove the objects you just created, and then run Configurator.
- When running the Configurator, it's very important that you:
 - make sure that you use the same name as the tnsnames.ora in the Configurator for the section on using ServiceName. For example, if your Tnsnames entry is ORCLPDB1, the same information needs to be entered in the SERVICENAME field in the configurator.
 - validate the user permissions using a script located at: [Validate User Privileges Script for Oracle](#)

Microsoft SQL Server characteristics

- 64-bit client libraries are already installed on Windows machines.
- Ensure that the server and database are set to case-insensitive, as case-sensitive is not supported. Also set the SQL Server Configuration Properties to allow SQL Server authentication. Team Server only supports SQL Server Authentication.
- The database and server collation must be set to **SQL_Latin1_General_CP1_CI_AS**.
- When using SQL Server, ensure the SQL Server Agent is running.
- Team Server on SQL Server only supports the following communication protocols:
 - Shared Memory
 - TCP/IP
 - Named Pipes
- The option **ANSI_NULLS (Server Properties > Connections)** must be set as **On**.
- The default schema for ERTS needs to be **dbo**. If you were using a different schema, please move the tables to **dbo** schema previous to install or upgrade.



After configuring a new installation against a SQL Server 2014 or later database, it is recommended that you go into the properties of the new database and change the compatibility settings to 2012 or 2008. This step helps prevent significant performance degradation in many environments.

About Team Server and Repository upgrade

Prerequisites



Before running the installer for an upgrade, stop the **IderaTeamServer** service from the Services control panel.

- 64-bit OS. Team Server/Repository 16.0 and later are only supported on 64-bit machines.
- Download the latest Team Server installer
- *Highly recommended* that you back up the database
- Repository must be on version 6.5, 6.6, 6.7, or 7.0. If you are on an earlier version, please refer to the ER/Studio documentation website for [upgrade instructions](#)
- Database server where the current Repository database resides
- Database user who owns the Repository objects
- Database user currently must have db_owner (SQL Server), and DBA role (ORACLE)
- Repository Admin password
- ER/Studio Data Architect version that corresponds to the version you to which you want to upgrade must be installed on a separate client machine

Preparing the upgrade

Repository user preparations

1. Ensure you have backed up all your .dm1 files.
2. Check in all your diagrams and objects. If you try to check in a file from the previous version with the same name as a current file, the current file will become corrupted.
3. Rename all local copies of Repository diagrams in the active file directory as follows:
 - a. Choose **Repository > Options** and make note of the Active File Directory.
 - b. Switch to the Windows Explorer and rename all the diagrams in the Active File Directory in order to protect them of being overwritten. Example: Backup_DiagramName.dm1.

Repository administrator preparations

Ensure no one is logged into the Repository, and then back up the current Repository database.



If you are upgrading from a Repository version prior to 4.0, you can delete the C:\Program Files\Embarcadero\Repository\Data directory. This directory is not used with Repository versions 4.0 and later.

Upgrading from Team Server 4.0.x, CONNECT 3.0.x or ER/Studio Portal 2.0.x

1. Make a copy of the license files, for example: license.txt, ao_12345678.txt or .slip until the upgrade has completed. Then copy to the license folder in the installation directory of the new Team Server installation folder.
2. Depending on your installation location, you can find the license file in the program directory. For example: C:\Embarcadero\ERStudio Portal 2.0\license
3. If you have already used the uninstaller, you may also have a license backup in the following Windows locations:
 - 32-bit: C:\Program Files (x86)\Common Files\ersEnterprisePortalBackup\license
 - 64-bit: C:\Program Files\Common Files\ersEnterprisePortalBackup\license
4. After copying over the license.txt file to the license folder within the installation folder of Team Server, [log into Team Server](#) as Admin, select **My Settings > Admin > Licenses**, and then click **Refresh** for Team Server to recognize your licenses.



We always recommend backing up your data before starting the process. You may have to back up your database and, for Team Server and Connect, export your [Glossaries](#) and [Terms](#).

5. [Uninstall](#) the previous version.

Upgrade scenarios

First of all, prepare the upgrade for any scenario.

Upgrades from Team Server 16.x which includes Repository 7.0.1

1. DO NOT UNINSTALL the previous version of Team Server. The new version will back up the data from the previous version and restore it as part of the new Team Server/Repository installation procedure. This procedure allows published diagrams and workspaces to remain published after upgrade
2. Install Team Server 19.x.

Upgrades from Repository 7.0.X (Standalone)

1. Uninstall Repository 7.0.X.
2. Install Team Server 19.x.
3. On the ER/Studio Repository Database Setup page, select **Specify location for Team Server database...**, this will expand the information fields.

Upgrade from Repository prior to 6.5/6.6/6.7 (Standalone) and TS 4.0 or before

You can perform an upgrade to the latest version of Repository directly from versions 6.5 and later. There is no need for incremental upgrades before attempting to upgrade to Repository.

1. Install the latest version of Team Server and Repository.
2. On the ER/Studio Repository Database Setup page, if you were also using Team Server 4.0 or previous, select **Specify location for Team Server database**. This will expand the information fields.

Upgrade configuration

If you are upgrading from Team Server 16.x or later, you already have one unique combined database, so you can directly follow the steps on the repository setup.

If you have installed Team Server XE7 or any previous version, including CONNECT or Portal, you need to specify the information to connect to its database. The new installer will copy the Team Server database tables into the Repository database, after which both Repository and Team Server Web will share the same database.

1. Check the ER/Studio Repository Database Setup page and introduce repository database information.
2. Select **Specify location for Team Server database**, this will expand the information fields to include Team Server database information.
3. Fill the fields with the Team Server database information with the same structure than you have introduced previously for repository database.
4. If your Portal installation was using a separate Solution database, select **Specify the location of Solution database**.
5. Specify Portal Solution database details so the tables copy to the Repository database.



Note for Oracle Users: Once the upgrade is done, the alias in the tnsnames file must be updated to point to the new database server in case you had old databases in different machines.

Important notes

- Always back up databases before upgrading.
- Upgrading diagrams is time consuming and memory intensive. The number and size of the diagrams managed in the upgrade dictates how long the upgrade process takes.
- Regardless of the process you must follow to back up your licenses, which depends on the previous version that you are upgrading from and other factors, after you restore your licenses in your new installation, you must log in as a super user and use the [Manage Users](#) page to assign different types of available licenses to your users.

See also

- [Install or Upgrade Team Server and Repository](#)
- [Uninstalling Team Server](#)

Install or upgrade Team Server/Repository

Please ensure that you have read the [Installation and upgrade notes](#) before proceeding.



If you are upgrading from an ER/Studio Team Server/Repository version prior to 19.1, you must run the [Diagram Data Version](#) in ER/Studio Data Architect to upgrade your diagrams to the latest release.

To install or upgrade Team Server and Repository, run the new installer and follow the steps. You need a user with administrative privileges to run the installation wizard.

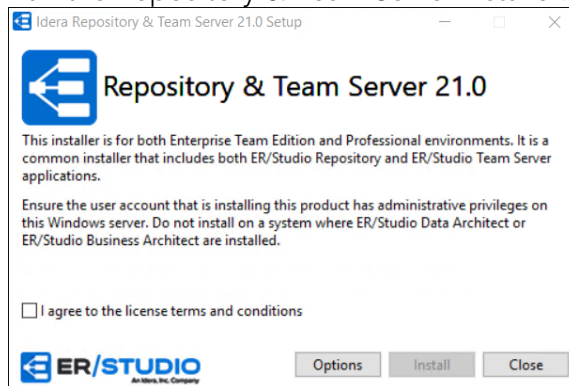


Before running the installer for an upgrade, stop the **IderaTeamServer** service from the Services control panel.

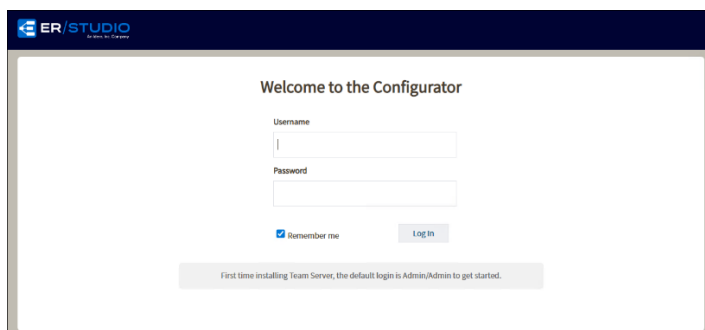


You may have to create a blank database before starting the installation, please check the [Installation and upgrade checklist](#).

1. Run the Repository & Team Server installer.



2. If you need to change the default port or install location, click **Options**, and then make the appropriate changes. Note that you cannot change the port after installing the product. Be sure you verify the port number before continuing.
3. Agree to the license terms, and then click **Install**.
4. After a successful setup, restart your machine to complete the installation process.
5. Launch the Team Server Configurator. This step launches both the Web browser and Team Server Configurator, which may take a few minutes.
6. Once the Configurator opens, log in using Admin/Admin (case-sensitive).



7. On the Installation Options page, choose your installation options.

ER/STUDIO
An IDERA, Inc. Company

Help | Log Out

Configuration

1. Installation Options
2. Repository DB Setup
3. Migrate Team Server
4. Team Server Admin Account
5. Image Generation Account
Optional
6. HTTPS
7. Single Sign-On

Installation Options

Please select installation type.

Professional Edition

Ensure that you select Professional Edition only if you have a Professional Edition license.

Enterprise Team Edition

For all Enterprise editions, specify Enterprise Team Edition, even if you intend to use repository functionality only at this time.

Please select if this is a new installation of Enterprise Team Edition or an upgrade from a previous version.

New Installation

Selecting New Installation will create a new database for the repository (and Team server if applicable).

Upgrade or connect to existing database.

Please choose upgrade if you have an existing database that requires updates.

Next Cancel

Note that the options change based on your selections.

ER/STUDIO
An IDERA, Inc. Company

Help | Log Out

Configuration

1. Installation Options
2. Repository DB Setup
3. Migrate Team Server
4. Team Server Admin Account
5. Image Generation Account
Optional
6. HTTPS
7. Single Sign-On
8. Notification
9. Repository Settings
Configuration Execution

Installation Options

Please select installation type.

Professional Edition

Ensure that you select Professional Edition only if you have a Professional Edition license.

Enterprise Team Edition

For all Enterprise editions, specify Enterprise Team Edition, even if you intend to use repository functionality only at this time.

Please select if this is a new installation of Enterprise Team Edition or an upgrade from a previous version.

New Installation

Selecting New Installation will create a new database for the repository (and Team server if applicable).

Upgrade or connect to existing database.

Please choose upgrade if you have an existing database that requires updates.

Retrieve a Team Server License

You can retrieve your purchased license or request a trial using your IDERA User Account.

Don't have an IDERA User Account? [Create Account](#)

IDERA Login Or Email Address

Password Show

I want to use the included 2-week trial license

I want to request a trial license

I have purchased a license through my IDERA User Account

Serial Number

I have a license file to import

[Import From File](#)

Unable to connect?
Use the following to connect to the web registration from another machine.

Registration code:

Web registration link: [http://www.idera.com/registration](#)

Next Cancel

8. Complete the license information. Note that the server that you are installing on must have internet access to request a trial or register a serial number.



If you do not have internet access, first connect with a machine that does have internet connectivity using your serial number (provided in the license email), the URL and registration code displayed in the **Unable to connect** section of the Installation Options page.

- In the **IDERA Login** or **Email Address** field, enter your existing account name. If you want to use the included trial license or want to request a custom trial license, select the option and complete the appropriate fields.
- In the **Password** field, enter the password associated with your IDERA login.
- If you already have a license, select that option and specify the serial number to register in the **Serial Number** field.



If you have a license file, please select the appropriate option and use the **Import from File** button to register.

9. Click **Next**. The ER/Studio Repository Database Setup page appears.
10. In the Repository Database Setup page, select the DBMS platform where you want to install, and then specify the information to connect to your Repository database.
 - a. In the **Host Name** and **Port** fields, type the hostname of the machine that contains the Repository database. The port number appears by default.
 - b. In the **Specify Alias** field, type the alias created with the SQL Server client utilities when a non-default port or named instance is used. An error in this field could cause Repository connection issues from ER/Studio Data Architect.



Windows Authentication Users. When you check **Windows Authentication**, the **Domain** field appears. You must specify the Windows account with the domain and username listed separately. In addition, the Windows account must have the **Log on as a service** permission on the local app server as the Repository services are changed to run under that account in order to connect to the database using Windows authentication. If the account does not have this permission, you will receive an error when testing the connection.



Service Principal Authentication Users. When you check **Service Principal Authentication**, the **Client ID**, **Client Secret**, and **Database** fields appears. Type the Azure AD service principal client ID and secret. In addition, the user account must have the **Log on as a service** permission on the local app server as the Repository services are changed to run under that account in order to connect to the database using Service Principal authentication. If the account does not have this permission, you will receive an error when testing the connection.



Manifest Certificate Authentication Users. When you check **Manifest Certificate Authentication**, the **Tenant Id**, **Client ID**, and **Certificate Path** appear. Note that the certificate path must be in .pfx format. For more information about using this feature, see [Using Manifest Certification Authorization](#).

- c. In the **Username** and **Password** fields, enter the credentials needed to access the Repository database.
- d. In the **Database** field, type the name of the database that you have previously created to be your Repository database.

- e. If you want to specify different credentials to be used by Team Server to interact with the database, check the appropriate box, and then type the **Username** and **Password** (case-sensitive).
 - o If you selected **Oracle**:
 - In the **SID** field, type your database identifier.
 - If you selected **Use Oracle Service Name**, the **SID** field is **Oracle Service Name**. Type the service name you use.
 - o If you selected **Microsoft Azure SQL DB** or **Microsoft SQL Server**:
 - If the database server is a named instance, specify the **Host Name** in the HostName\NamedInstanceName format. For example, DEWKBOW01\DBServer.
 - Optionally, for Azure and Microsoft SQL Server 2012-2022, you can check **Use SSL** to enable the Secure Sockets Layer (SSL) communication protocol, which encrypts messages. When SSL is enabled, Team Server uses ports 80 and 443 for secure communications.
 - It is possible to have the installer create your MSSQL database for you at this point. If you enter the name of a non-existent database, the installer pops up a confirmation window and then creates the database.
11. Click **Test** to check your database connection.
12. Click **Next** to continue. **If you are upgrading from Team Server 4.0.9 or earlier ONLY**, the Migrate Team Server page appears and you may continue with the next step. **If you are upgrading from Team Server 16.0 or later**, continue with the Team Server Administrator Account page. **If you are installing for the first time**, the Windows Service Account page appears and you should continue with that section of this topic.



Please note that the configurator displays the Migration and Team Server Admin Account tabs only if you are upgrading.



Do not complete the Migrate Team Server page for upgrades from Team Server 16.0 or later.

The screenshot shows the 'Migrate Team Server' configuration page in ER/STUDIO. The left sidebar lists configuration steps: 1. Installation Options, 2. Repository DB Setup, 3. Migrate Team Server (highlighted), 4. Team Server Admin Account, 5. Image Generation Account, and an 'Optional' section with 6. HTTPS, 7. Single Sign-On, 8. Notification, and 9. Repository Settings. Below these is 'Configuration Execution'. The main content area is titled 'Migrate Team Server' and contains the following options and fields:

- Migrate the DB to this version if you have installed Team Server 4.0.x, CONNECT, or Portal in the past
- Same server and user as the Repository Database
- Host Name: Port:
- Use SSL (uses ports 80 and 443)
- Specify database user for Setup:
 - Username:
 - Password: Show
 - Database:
- A 'Test' button is located below the Database field.
- At the bottom right, there are 'Back', 'Next', and 'Cancel' buttons.

- a. *If you upgrade from Team Server 4.0.9 or earlier*, specify the detail to connect to its database. The installer copies the TS database tables into the Repository database, then both Repository and Team Server Web share the same database.

- b. Complete the fields with the Team Server database information with the same structure you introduced previously for repository database.
- c. Click **Next**. The Team Server Administrator Account page appears.

13. In the Team Server Administrator Account page, enter the administrator Team Server login credentials. This account is typically the Admin user and password used when logging into Repository from ER/Studio Data Architect.
14. Click **Test** to check your Team Server credentials.
15. Click **Next**. The Image Generation Account page appears.

16. In this page, type the credentials for the Windows user account you want to use within Team Server. This page works best as a service account that is not required to have regular password changes.

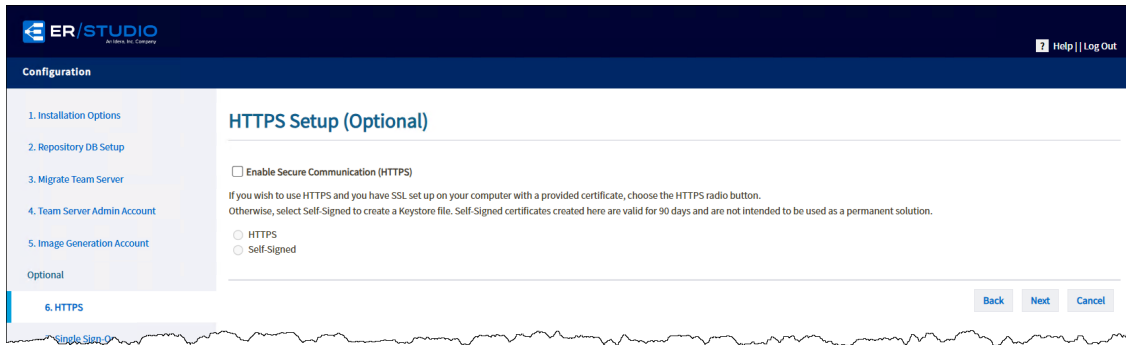
Administrators need to ensure that the account used for the Windows Service Account has proper permissions on the application server. You can verify these settings by going to **Administrative Tools > Local Security Policy > Local Policies > User Rights Assignment**. The user account should have local administrative privileges, and specifically the following privileges are required:

- **Act as part of the operating system**
- **Create a token object**
- **Log on as a batch job**
- **Replace a process-level token**

Note that this account *must not have* the **Deny log on locally** permission.

- a. In the **Windows User** field, enter the name of a Windows user that Team Server can use to log into the system. The user account must have local administrative privileges. The name should be in the format "machine_name\username".

- b. In the **Password** field, enter the password of the Windows user login credentials to be used by Team Server to interact with repository (case-sensitive):
 - Leave it blank to keep using Admin/Admin to log into ER/Studio Repository.
 - If you want to modify the super user login to enter into ER/Studio Repository, introduce the information. If the login does not exist, it is created.
17. Click **Test** to check your Windows account credentials.
18. Click **Next** to continue. The optional HTTPS Setup page appears.



Self-signed certificates are valid for 90 days and are not intended as a long-term solution for production environments.



When creating a certificate when SSO is enabled, make sure that you use IP address, hostname, and localhost. When creating a self-signed certificate, SSO works only with the name provided when creating the certificate.

19. In the optional HTTPS Setup page, you can choose to enable HTTPS (SSL). It is recommended that you enable secure communications as this will keep your password transmissions secure.
20. Optionally, select **Enable Secure Communication (HTTPS)** to enable it.
21. If you do not have SSL set up on your server, you can select the **Self-Signed** option to walk you through the short wizard that creates a Keystore file allowing you to use encryption. Fill out the fields of the Self-Signed wizard, and then click **Generate**. The Keystore file is created in the location of your choosing.
22. If you already have SSL set up on your server, directly enter the information required.
23. Click **Next**. The optional Single Sign-On page appears.

24. In the optional Single Sign-On page, check **Use LDAP server for authentication** to use the Lightweight Directory Access Protocol (LDAP) and enable the ability for users to [log into Team Server](#) using their domain username and password. You can enable LDAP authentication any time later:
25. In the **LDAP URL** field, enter the URL of the server running LDAP.
26. In the **Manager DN** field, enter the distinguished name for the user that is used to authenticate users. ERTS uses this to connect to the LDAP server and validate user credentials. For example, `CN=administrator,CN=Users,DC=mydomain,DC=com`



In this example, **administrator** is used. In which case, **Users** is defined as a container rather than an organizational unit as is the Microsoft Active Directory default. Your user accounts may be in an organizational unit; in this case, you would specify it differently, for example, `CN=user1,OU=sales,DC=mydomain,DC=com`.

27. In the **Manager Password** field, enter the password for the administrative user.
28. In the **Search Base** field, enter the name of the root node in LDAP from which to search for users. For example, `CN=Users,DC=mydomain,DC=com`.
29. In the **Search Attribute** field, enter the attribute in LDAP holding the user's login name. For example, `sAMAccountName` (for ActiveDirectory).
30. In the **Test User / Test Password** fields, enter the username and password of a sample user to authenticate against the LDAP server. The installer uses this information to validate the LDAP information before moving to the next page.
31. Click **Test**. If it is successful, this enables the **Next** button.
32. Click **Next**. The optional Enable Email notification page appears.

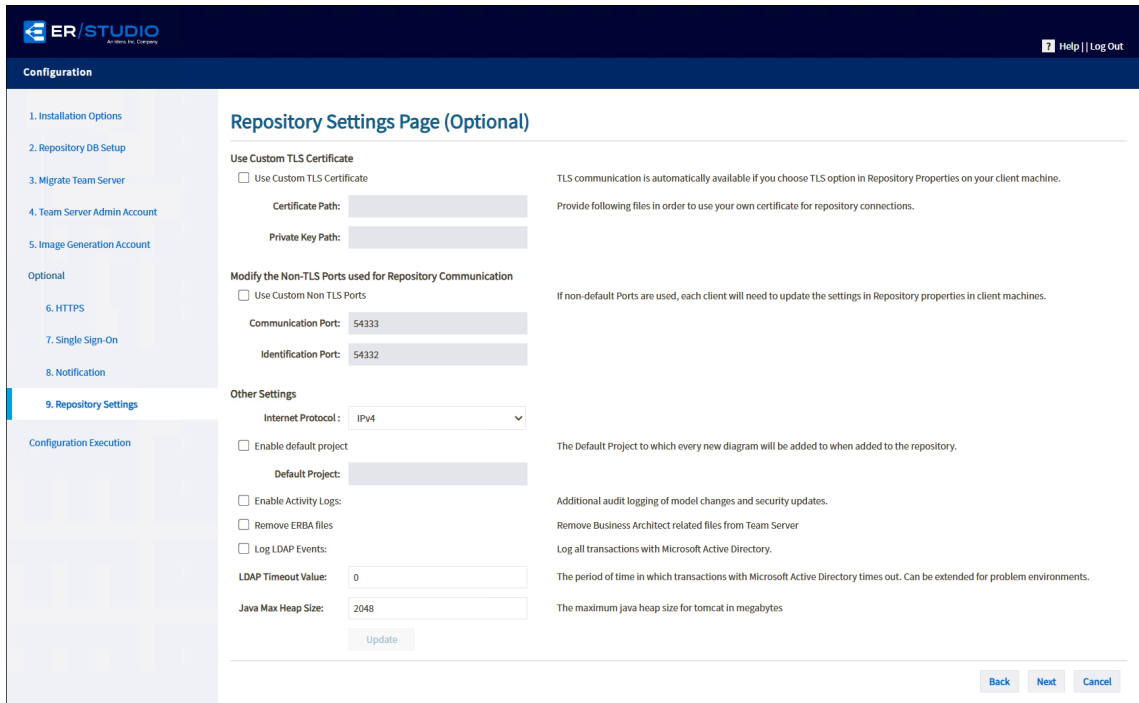
To use Azure AD, OKTA, or RSA identity providers via OpenID Connect for Authentication, in the Single Sign-On page, leave **Use LDAP server for authentication** unchecked. For more information about setting up the Team Server Configurator for these providers, see [Activating SSO in the Team Server Configurator](#).



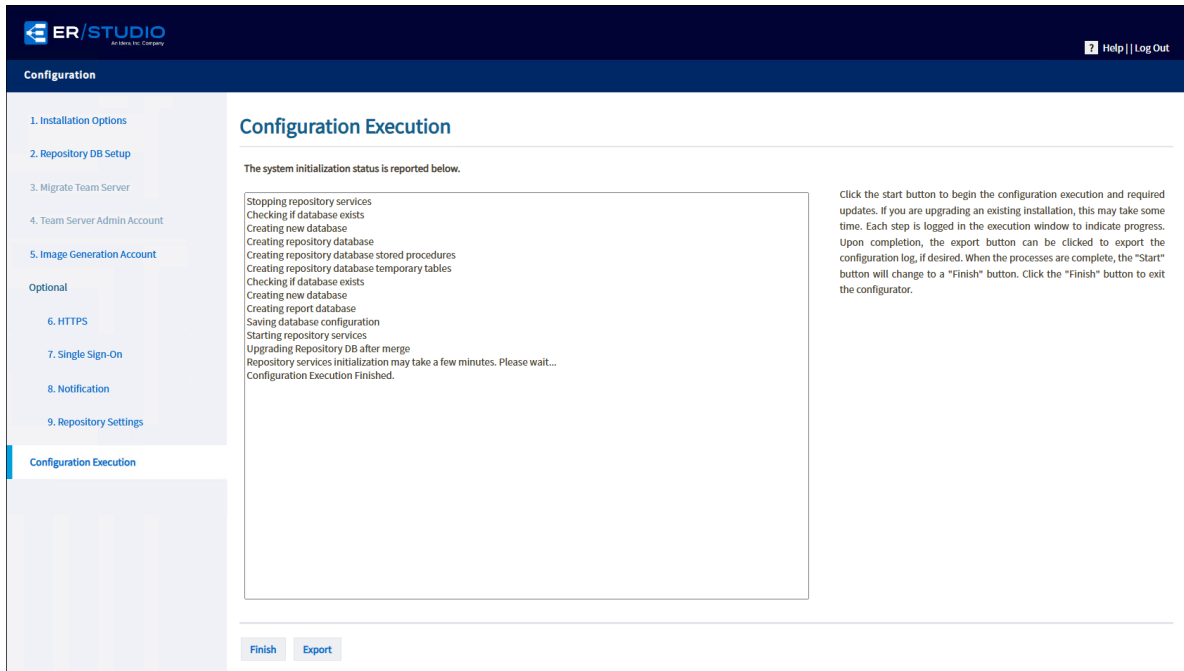
If you are using RSA Secure ID for authentication, note that entries in the **Claim: Email** and **Claim: User Name** fields must be the same as provided in the RSA console or you receive an error message upon attempting to log in.

The screenshot shows the 'Enable Email Notification (Optional)' configuration page in ER/STUDIO. The left sidebar lists configuration steps: 1. Installation Options, 2. Repository DB Setup, 3. Migrate Team Server, 4. Team Server Admin Account, 5. Image Generation Account, 6. HTTPS, 7. Single Sign-On, 8. Notification (selected), and 9. Repository Settings. The main content area has a title 'Enable Email Notification (Optional)'. It contains a checkbox 'Allow users to send search results and reports by email from Team Server using SMTP'. Below this are input fields for 'Email Address', 'Server', and 'Port'. There are also checkboxes for 'Use TLS' and 'Requires Authentication'. If 'Requires Authentication' is checked, there are input fields for 'User Name' and 'Password', and a 'Show' checkbox. A 'Test' button is located below the 'Password' field. On the right side, there are three paragraphs of instructional text: 'Enter the email address that you want to use as the sender of the emails sent from Team Server. You may want to prepare a special email address on your email server for this purpose.', 'Enter the fully qualified network name (for example: "mail.example.com"), or the IP address (for example: "10.10.23.250") and the port number where the email server is listening. Specify a value of 25 for port if you wish to use the default port.', and 'Check this box if your email server requires authentication before sending email. You will also need to specify the user name and password below.' At the bottom right, there are 'Back', 'Next', and 'Cancel' buttons.

33. In the optional Enable Email Notification page, check **Allow users to send search results and reports by email from Team Server using SMTP**. You can enable notifications anytime later:
34. In the **Email Address** field, enter the email address that you want to use as the sender of the emails sent from Team Server. You may want to prepare a special email address on your email server for this purpose.
35. In the **Server** and **Port** fields, enter the host name of the email server (for example, "mail"), the fully qualified network name (for example: "mail.example.com"), or the IP address (for example: "10.10.23.250") and the port number where the email server is listening. The default port is 25.
36. *Optional.* Check **Requires Authentication** if your email server requires authentication. When you check this option, the **User Name** and **Password** fields are highlighted. Fill them with the required values to authenticate Team Server against your STMP server.
37. *Optional.* Click **Test** to check your email server connection.
38. Click **Next**. The Repository Settings page appears. The optional Repository Settings page allows you to manage settings such as customer TLS certificates, non-TLS ports, and enabling a default project.



39. Check **Use Custom TLS Certificate** to have secure Repository communication with ER/Studio Data Architect and Business Architect. Note that TLS communication is automatically available if you choose to TLS option in the Repository Properties page on your client machine. This area also allows you to input your own certificate.
40. Check **Use Custom Non-TLS Ports** to change the non-TLS ports used for Repository communication. Note that if you use non-default ports, each client must update the settings in the Repository Properties page on your client machines.
41. In the **Internet Protocol** dropdown list, select from options **IPv4** (default) or **IPv6** to use when communicating with the Repository.
42. Check **Enable Default Project** to select a single Project to which all new Diagrams are added when they are added to the Repository.
43. Check **Enable Activity Logs** to include additional audit logging of model changes and security updates. Once you enable this action and complete the Configurator, you must open **services.msc**, and then restart the **Idera Repository Database Server** service.
44. Click **Update**, and then click **Next**. The Configuration Execution page appears to show the progress of your system initialization.
45. Click **Start** to execute initialization/migration. The following image is an example of a new installation configuration execution.



46. Click **Finish**. Team Server and Repository are now installed/configured.



If you are upgrading from an ER/Studio Team Server/Repository version prior to 19.0, as soon as your installation/configuration is complete, you must [run the Diagram Data Version Upgrade in ER/Studio Data Architect](#) to upgrade your diagrams to the latest release.

Modify configuration

You can modify the configuration at any moment by going to **My Settings > Configurator** from the Team Server Home page.

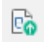



After initial install and upgrade, the settings return to default. You should address your Java memory settings such as Initial and Maximum Memory Pools based on your available machine RAM. This will affect performance.

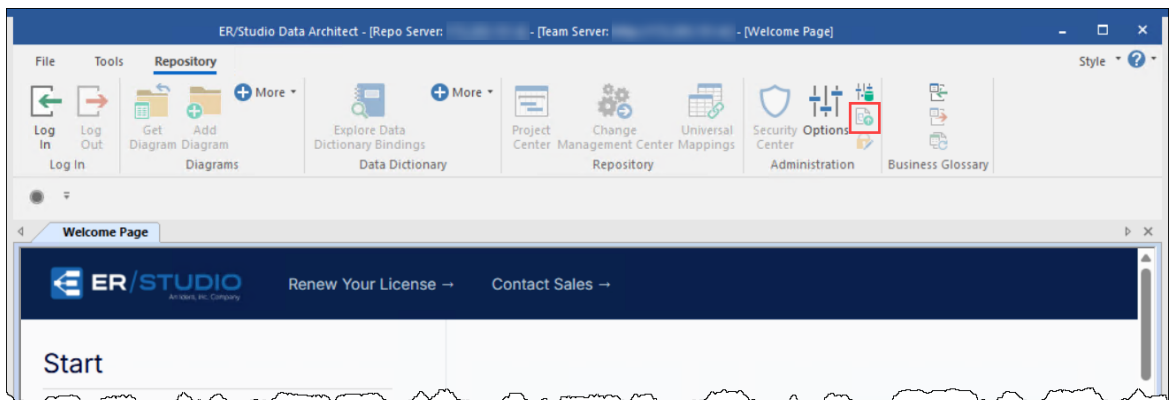
Upgrading diagrams in Data Architect (19.0 or earlier upgrades only)

If you are upgrading to the latest version of ER/Studio Enterprise Team Edition from Team Server/Repository 19.0 or earlier, you must run the Diagram Data Version Upgrade to upgrade your existing diagrams. This process assumes that you already upgraded Data Architect to the latest version.

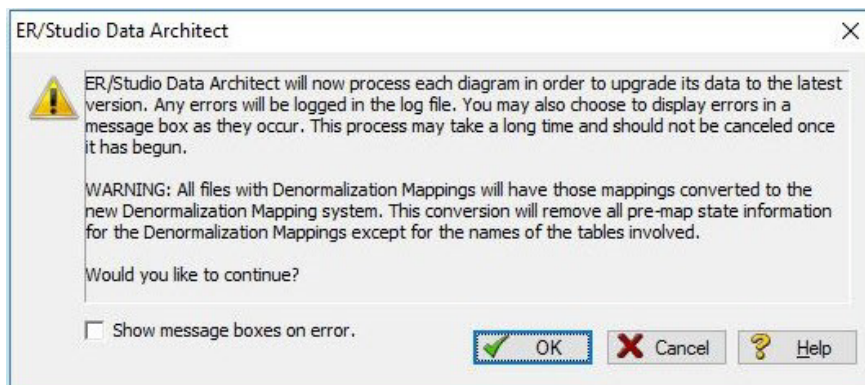
To upgrade diagrams:

1. After upgrading Team Server/Repository to the latest version, launch ER/Studio Data Architect from the client machine and log into the Repository with the Admin user credentials.
2. Go to **Repository > Administration**, and then click the Diagram Data Version Upgrade icon  to upgrade your diagrams to the latest version.

 Once you upgrade your diagrams, you cannot open any of the diagrams using a previous version of ER/Studio Data Architect.



3. On the confirmation message window, review the information including the warning, and then click **OK**.



4. On the Select Log File Location window, choose a location to place the upgrade log in case issues occur during the upgrade.
5. Depending on the size and number of models in the Repository, the upgrade could take a few minutes. Once the diagram upgrade is complete, users can log in and begin using Team Server Repository. Note that after upgrading, diagrams must be published once in Team Server before they can be viewed by users.
6. Launch a Web browser and connect to Team Server, log in with Admin user credentials.
7. Go to **Publish Models** in the ribbon menu.
8. Select the diagrams you want to publish using the check boxes, and then click **Publish**.



For those environments having more than 50 models, it is recommended that a single model be published first. After publishing that one model, you can select multiple models for publication.

Uninstalling Team Server

To remove an installation of Team Server and Repository:

1. Select **Start > Programs > Team Server X.X > Uninstall Team Server** to start the uninstallation wizard.
2. On the Welcome page, click **Next**.
3. On the Summary Information page, review the information and click **Uninstall**.
4. Once the uninstallation process is completed, click **Finish** to close the uninstallation wizard.
5. After you close the uninstallation wizard, you are given the choice to reboot immediately or at a later time. For a complete uninstallation, a system reboot may be required. Make your selection and click **Finish**.

Notes

- The Team Server uninstaller does not uninstall the [Team Server Reporting Repository database](#). It is the Database Administrator's responsibility to delete the Reporting Repository database if you decide to permanently delete Team Server.
- When Team Server is uninstalled, the backup folder remains in the disk. In case you are uninstalling Team Server with no plans to install it again, remember you can delete this folder manually. You may find a backup folder in the following locations:
 - Team Server 4.0.8 and previous versions: C:\Program Files (x86)\Common Files\ersEnterprisePortalBackup
 - Team Server 4.1: C:\Program Files\Common Files\ersEnterprisePortalBackup
 - Team Server 16.0 and later:
C:\Users\username\AppData\Local\Temp\ersEnterprisePortalBackup

See also

- [Install or upgrade Team Server/Repository](#)
- [About Team Server and Repository upgrade](#)